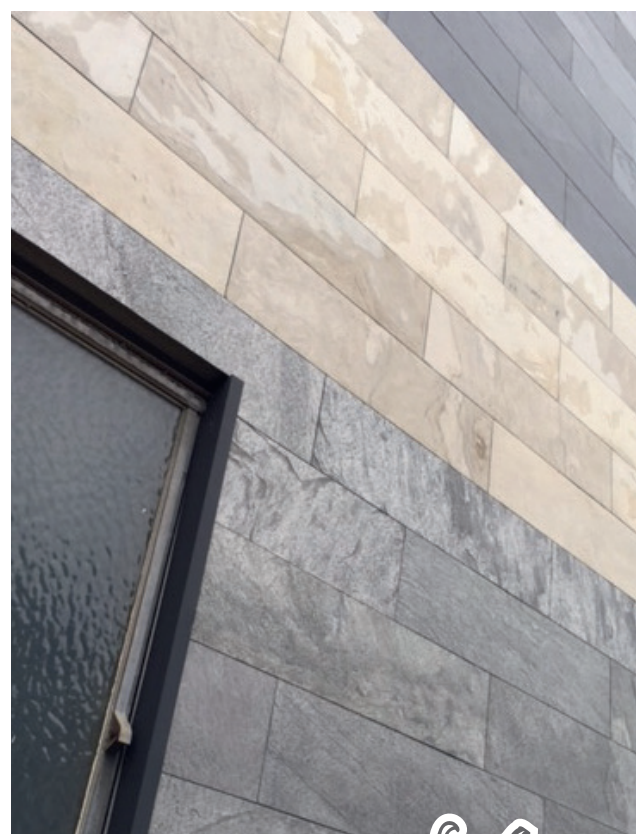
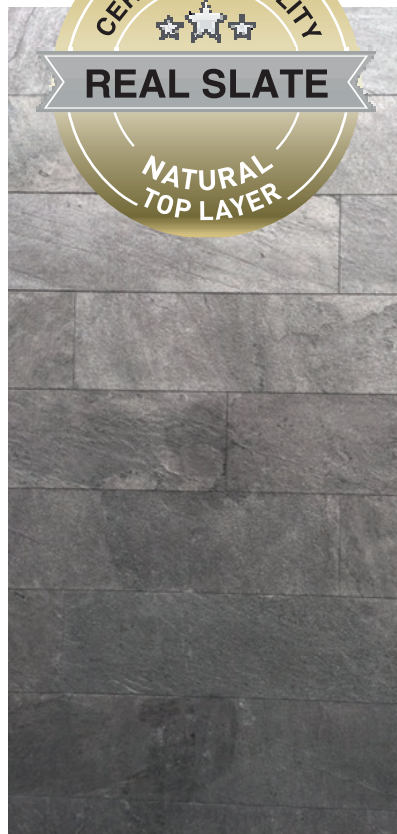
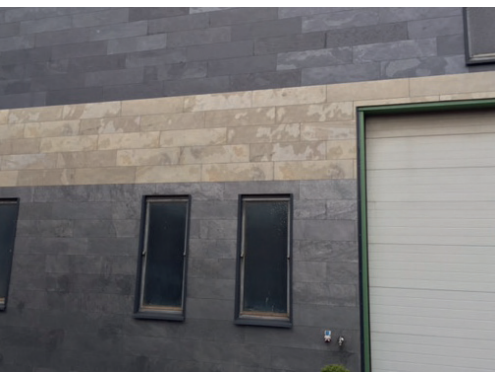
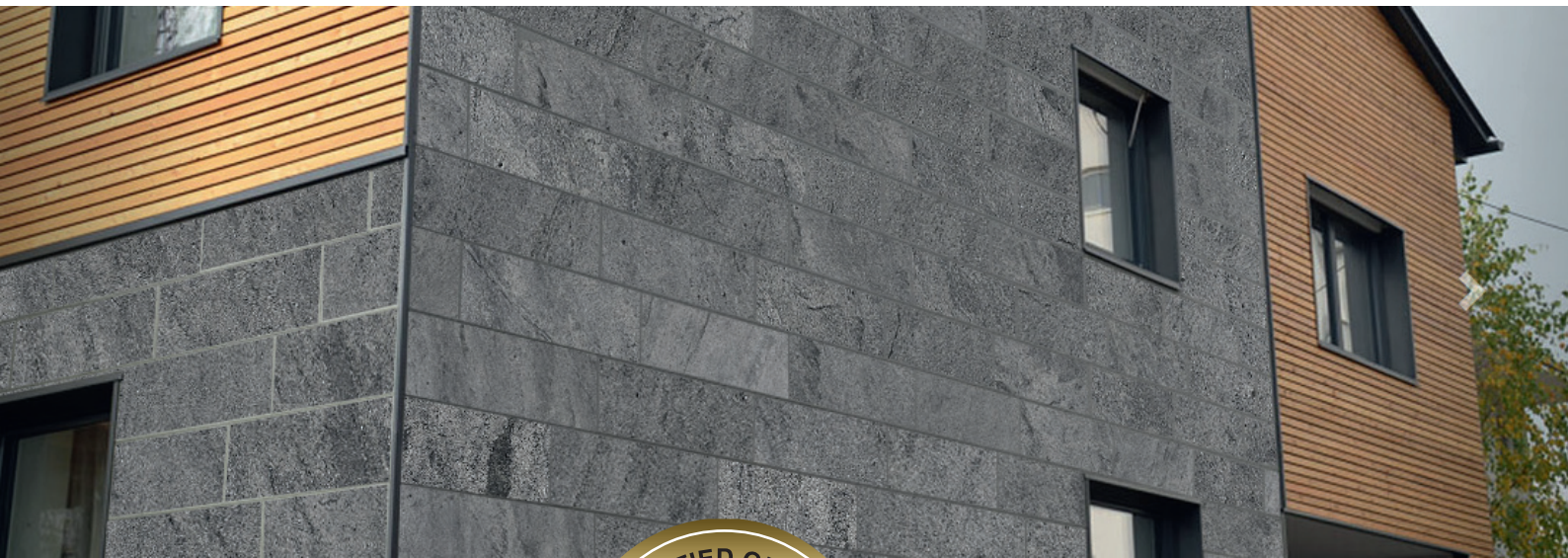




SLATE LINE

NATURAL SLATE FACADE SYSTEM

The new style of ventilated exterior cladding





SLATE LINE

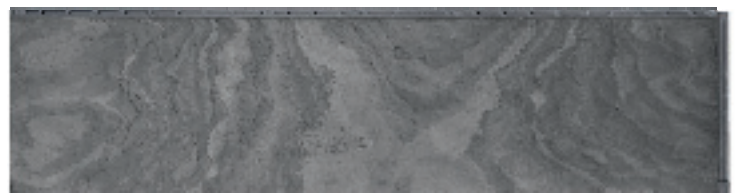


Facade-System: Components & Accessories

14.05.2017



Decor: Silver Grey (No. #1108102) | 1200x300 mm



Decor: Negro (No. #1108100) | 1200x300 mm



Decor: Silver Grey (No. #1108101) | 1200x300 mm



Aluminum Corner

No. #1108001

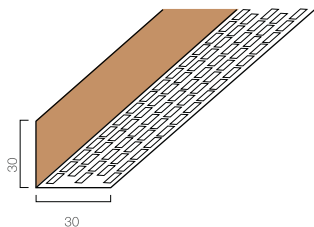
15mm | Anthracite | Length 5m



Aluminum U-Profile

No. #1108002

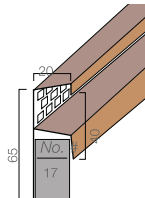
13mm | Anthracite | Length 5m



PCV Ventilation Angle

Black | Length 2,5m

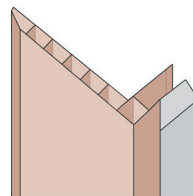
No. #1108004



PVC Eaves Ventilation Profile

Black | Length 5m

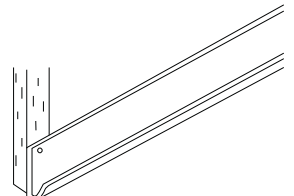
No. #1108005



PVC Connecting Bar

17mm Insertion | Length 5m

No. #1108003



Starter Rail

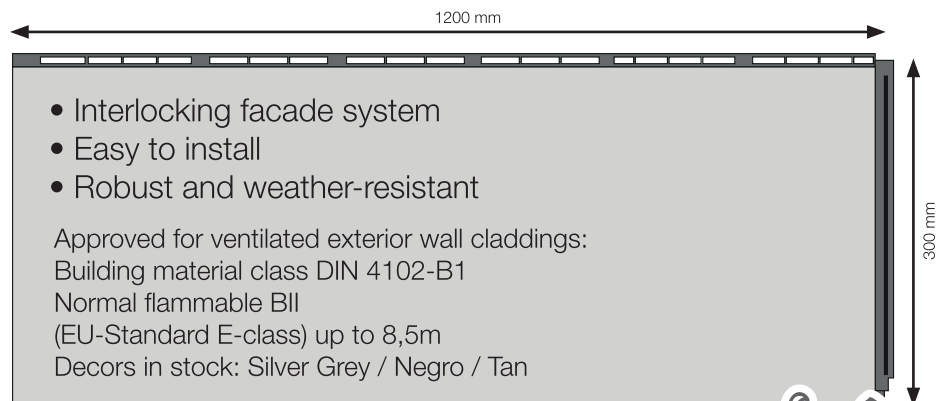
Length 3,2m

No. #1108006



Interlocking system:
Open closure

Interlocking system:
Closed closure



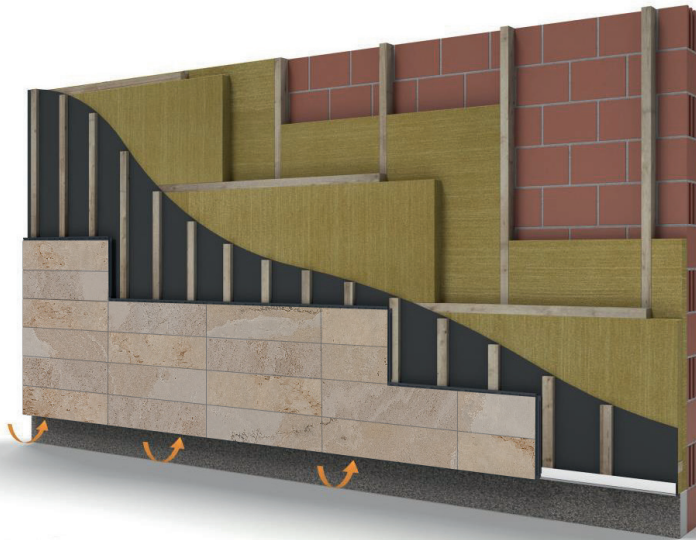


SLATE LINE



Processing instructions: Facade system

14.05.2017



IMPORTANT INFORMATION

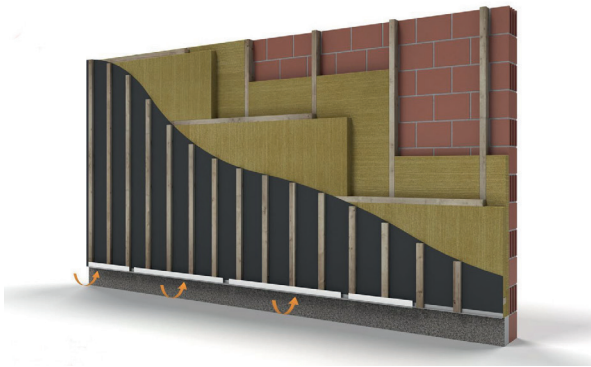
In this processing manual you'll find detailed instructions for the interlocking facade system by *Slate Line*. This instruction contains only general information about the processing of the *Slate Line* facade system. Relevant are the local conditions at the construction site, therefore no claims can be derived from the data.

Please also pay attention to ventilation and expansion: Strain per meter/per degree °C 0,02mm!

Facade system is approved by the building authorities for ventilated exterior wall cladding: building material class DIN 4102-B1.

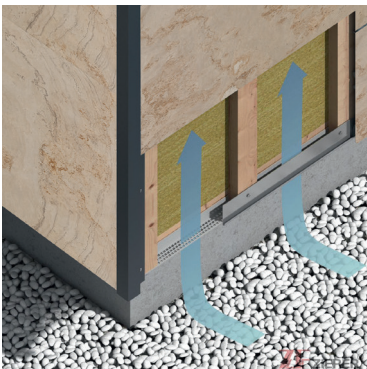
Normal flammable BII (EU-Standard E-class) up to 8,5m.

1) SUBCONSTRUCTION



The subconstruction is built according to the insulation thickness. The counter-batten can be used to compensate uneven walls. The vertical load-bearing structure is created at a distance of 25 cm, thus ensuring unobstructed ventilation. The starter rail is attached to the slat ends with the ventilation profile (lower ventilation) so that at least 3 cm distance remain to the subsoil.

1) STARTER RAIL AND LOWER VENTILATION (No. #1108006)



The starter rail is aligned horizontally and fastened to the battens with the ventilation profile (anti-mosquito protection) so that approx. 3 cm clearance (ventilation) remains to the subsoil. The transfer is from left to right, starting with a whole element. The recess in the starter rail is not to be considered.





SLATE LINE



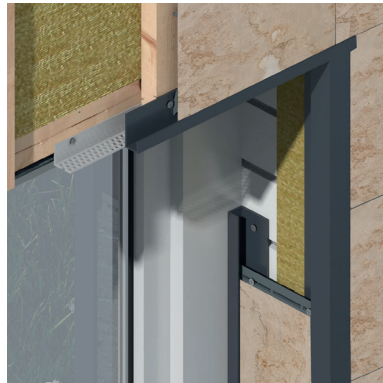
Processing instructions: Facade system

14.05.2017

3) USE OF THE U-PROFILE (No. #1108002)



The U-Profile is mounted in the area of the inner corner with insert on both sides.



The U-Profile is mounted as a connection to a window frame. A ventilation profile (lower ventilation) is also installed in the lintel area above the window.

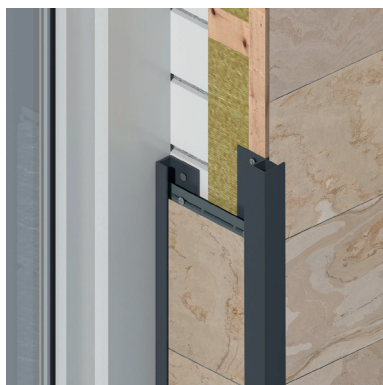


The U-Profile is used as a finish of the facade to a non-clad side.

4) USE OF THE CORNER PROFILE (No. #1108001)



The corner profile is used for cladding of the building exterior corner.



Corner profile in use with the U-Profile for connection to a window frame. A ventilation profile (lower ventilation) is also installed in the lintel area above the window.



Corner profile in use with the U-Profile for connection to a non-clad surface.





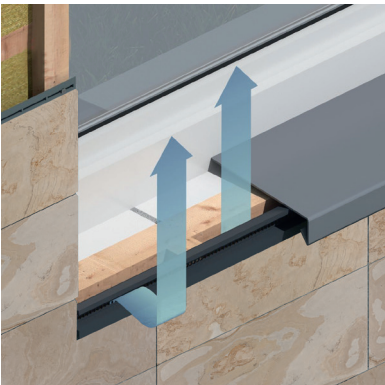
SLATE LINE



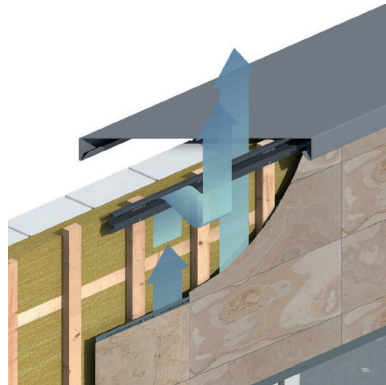
Processing instructions: Facade system

14.05.2017

5) UPPER CONNECTION WITH VENTILATION PROFILE (No. #1108004)



Connection profile of the facade area under the window sill (ventilation).



Top connection to the roof connection or roof slope (venting).

6) CONNECTION TO A NON-CLAD SURFACE (No. #1108003)



Side-facing to a non-clad facade surface with 120 mm leg length.

